

# DURA-METAL PRODUCTS CORPORATION

*The Superior Choice for Precision-Fabricated Components,  
Industrial Tooling and Parts that Resist Wear & Corrosion*



AEROSPACE & DEFENSE • AUTOMOTIVE • CONTAINER • ELECTRONIC • FOOD • GLASS • MEDICAL • METALWORKING • PAPER • STEEL

**Vendor Partnership Focus**

**Integrity Driven Relationships**

**Precision Quality Driven Results**

**DURA-METAL**  
**PRODUCTS**  
CORPORATION

Ultra-Hard Material Components

[www.dura-metal.com](http://www.dura-metal.com)

# Precision Ultra-Hard Parts & Tooling for a Wide Range of Applications

For nearly 50 years, **Dura-Metal Products Corporation** has been a precision machined COMPONENTS manufacturer focusing on tooling & industrial wear parts that resist wear & corrosion.

Some of the types of tooling we manufacture include:

- Composite Material Assemblies
- Draw/Swage/Extrusion Tooling
- Powder Metal Compaction Press Tooling (including 3R & Erowa Platformed)
- Blanking/Trimming/Forming Dies & Punches
- Various Types of Rolling Mill Rolls: Wire, Flattening, Forming (Cavellin, Fenn, Fuhr, Properzi, Stanat, Morgan, Waterbury & other)
- Fluid Flow Components & Assemblies
- Industrial Pump components- Seal Rings

The diverse materials we use to manufacture parts & tooling include:

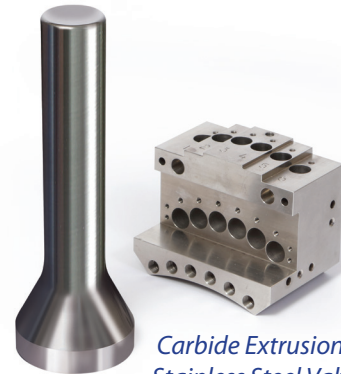
- Hardened Tool Steels
- Ferro-TiC Alloys
- Tungsten & other Cemented Carbides
- High Speed Steels
- Advanced Technical Ceramics

We complement our manufacturing capabilities with a full range of application engineering services that allow us to design original tooling or reverse engineer manufactured components using various CAD/CAM software solutions. To serve defense contractors and their suppliers, we are ITAR (International Traffic in Arms Regulations) compliant.

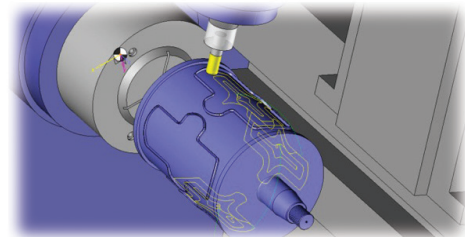
At Dura-Metal, we stand above competitors by assisting customers with the selection of wear and corrosion-resistant materials for the most challenging applications, and by including detailed in-process inspections at every stage of production. We perform 100% final inspection on all product and can supply dimensional documentation upon request.



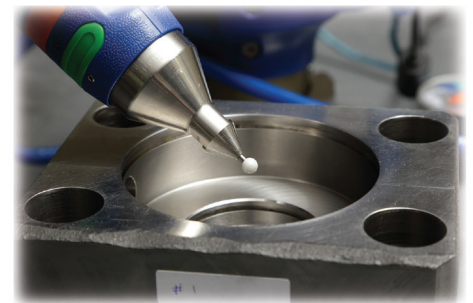
*Wide Range of Carbide & Tool Steel  
Wire Flattening Rolls*



*Carbide Extrusion Punch &  
Stainless Steel Valve Body*



*CAD/CAM Capabilities*



*Portable Faro Arm CMM*



*Various Carbide Dies, Slitters & Cutters*

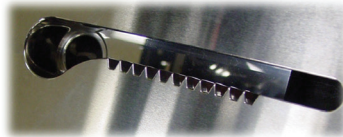
## A One-Stop Shop for Tooling that Resists Abrasion & Oxidation

Whether you are looking for parts that withstand wear and corrosion, or you are looking for various other types of tooling, we can be your ideal supplier. Some of the parts we manufacture include:

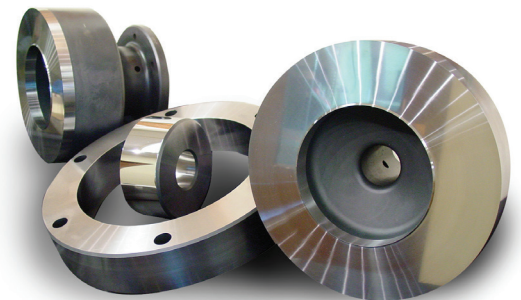
- Bushing Liners & Sleeves
- Fluid Flow Components
- High pressure Press Components including Cubic Anvils & Belt Style systems for synthetic Diamond manufacture.
- Wide Range of Metal Forming Punches, Dies & Forming Rolls
- Various Types of Metal Removal Tools, Cutting Blades & Knives
- Shafts & Mandrels for Wire, Can and other rolling type manufacturing
- Sleeve Bearings & Journals
- Specialty Gauging

Powder metal compaction and isostatic press tooling & components we manufacture include:

- Multi-Level Tooling Press Hardware
- Rotary Press Tooling
- Single & Multiple Cavity Dies



*High Pressure Pistons*



*Powder Metal Compaction Press Tooling*

We also provide Reconditioning services for used tooling.

### The Processes We Use

To satisfy customer specifications, we integrate various processes:

- **Electrical Discharge Machining** — Ram/Plunge & Wire
- **Grinding** — CNC, Center-Type, Centerless & Internal, Jig, Internal & External Radius, Optical, Surface & Form
- **Honing** — Rotary, External, Extrude
- **Machining** — CNC, Vertical, Turning
- **Polishing** — Bench, Superfinishing, Rotary Flat Lapping



*Wire EDM capability to 13.5" thick*

### Outstanding Quality Assurance

While many of our competitors limit quality assurance (QA) to their inspection departments, we take a better approach. At Dura-Metal, we believe that QA starts before we receive the order and continues after we ship the product. Specifically, we perform visual and dimensional inspections on all incoming materials and check workpieces at every stage of production. We then follow up with customers regularly to make certain that our parts and tooling meet or exceed specifications.



## *A Name Worth Remembering*

For almost 50 years, Dura-Metal has been providing Ultra-Hard Material fabrication services to customers in the Aerospace & Defense, Automotive, Container, Electronic, Food, Glass, Medical, Metalworking, Paper, and Steel sectors, as well as in other industries. Our unmatched ability to manufacture finished Wear & Corrosion-Resistant parts for a wide range of applications is supported by our dedicated staff. At Dura-Metal, our Manufacturing Operations and Engineering Management teams include highly trained machine tool operators and quality assurance professionals. Those groups work seamlessly with each other to offer a superior combination of products and value-added services.

**Our 30,000 square-foot, state-of-the-art manufacturing facility is located in Irwin, PA, 30 miles east of Pittsburgh.**



Operations Management Staff



Administrative Staff

# **DURA-METAL** **PRODUCTS** CORPORATION

Ultra-Hard Material Components



**Dura-Metal Products Corporation**

1552 Arona Road

P.O. Box 680

Irwin, PA 15642

[www.dura-metal.com](http://www.dura-metal.com)



Proudly servicing customers  
around the globe