



***fast > precise > efficient***

*Precision Tungsten Carbide Grinding  
& Advanced Ceramic Finishing*

  
**AGGRESSIVE**  
GRINDING SERVICE, INC.



## Operating with Integrity

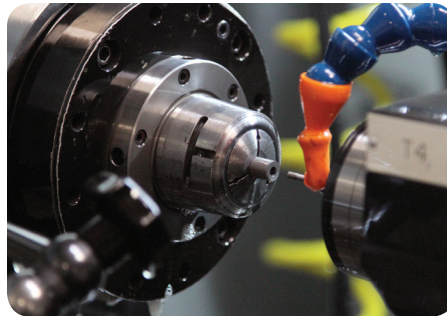
*We treat customers, employees and vendors as we would like to be treated — with honesty, courtesy and respect.*

*We practice our belief in The Golden Rule by offering fair pricing and quick turnaround, and by continually training the members of our team to perform their responsibilities efficiently and safely on the most modern equipment.*

*We view our customers as partners, and show our loyalty to them by NEVER selling products or services that compete with their businesses.*



**Get it In.  
Get it Done.  
Get it Shipped.**



At Aggressive Grinding Service, Inc. (AGS), we're in business to be your dock-to-stock supplier of parts that require Tungsten Carbide Grinding, Advanced Ceramic Finishing or PCD Grinding. To help you meet your tight production deadlines, we have the capacity to handle numerous large-quantity jobs at the same time.

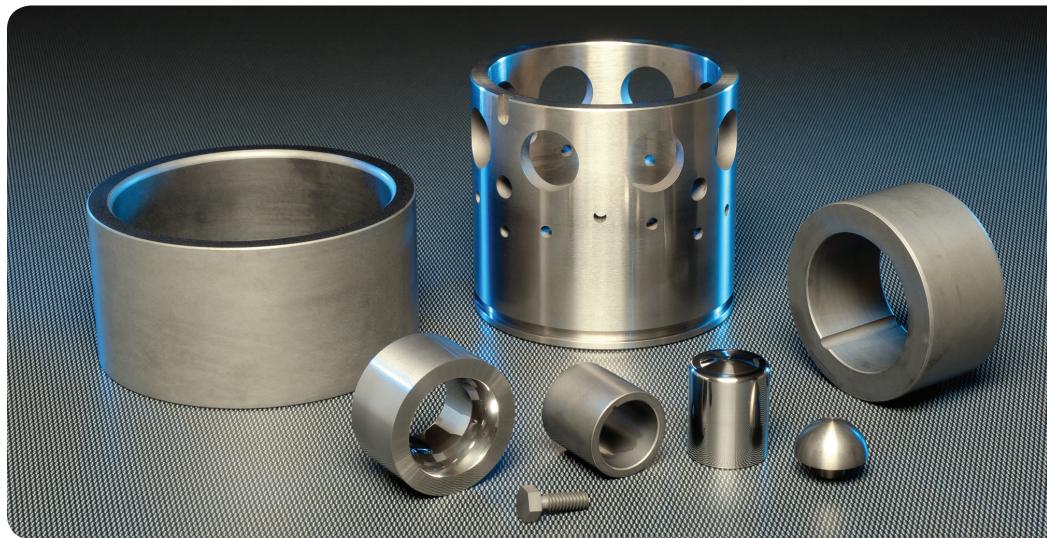
We also provide the industry's fastest delivery time on all orders, and use the latest technology to support our production and quality control systems. Those competitive edges have enabled us to develop a strong customer base throughout North America for over 30 years.

Whether you need 10 parts or 10,000, our highly-skilled professionals work around-the-clock to fill your orders quickly and accurately in our 42,000 square-foot facility.

We strive for continued excellence by:

- > Attracting and retaining employees with advanced technical skills who are excellent at what they do
- > Investing continually in state-of-the-art technology, including wireless digital micrometers that give real-time SPC updates
- > Providing an exceptionally clean and organized work environment





### Adding Value to Your Business

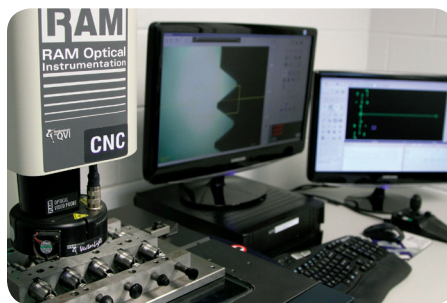
Our value-added services give us a competitive advantage that helps you meet the tightest tolerances and production schedules. They include:

- > Developing efficient processes based on practical experience and innovative solutions
- > Developing customized tooling to meet customers' particular needs
- > Partnering with OEMs to develop high-performing machines that provide the industry's quickest delivery times on all jobs
- > Partnering with grinding wheel manufacturers to develop higher-performing wheels
- > Laser etching of parts for serialization, cataloging, or part numbering

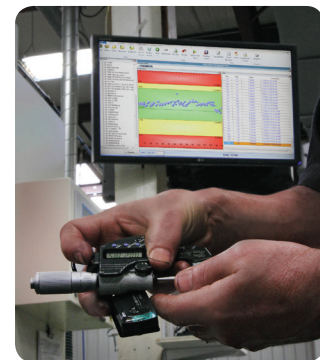
### Quality Assured

Our ISO 9001:2015 certified Quality Management System guarantees that every workpiece we machine meets or exceeds the required tolerances. To make certain that our work is always first-rate, we use:

- > RAM Optical Measurement Systems to perform dimensional inspections to tolerances of 0.0001"/inch



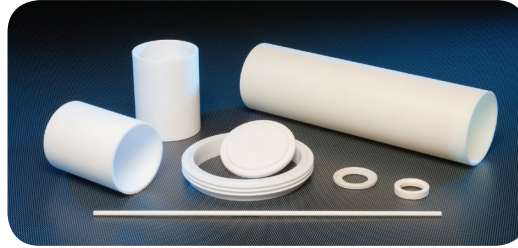
- > Six coordinate measuring machines (CMM), including two Zeiss Contura G2s and a Zeiss Duramax that performs rapid multi-point inspections on complex shapes and provides a printout for customer record retention
- > Wireless digital micrometers that send a real-time data point signal, captured by the MeasurLink® system, to the SPC database which is then displayed on overhead screens posted throughout the shop



At AGS we conduct multiple inspections throughout the production process to ensure that every part we machine conforms to specifications.

*10 parts or 10,000 — try us the next time you needed it yesterday!*

# A Dock-to-Stock Supplier that Gives You Peace-of-Mind



## Investing in Your Business Through the Most Advanced Equipment

Our commitment to remain a leader in the use of technology enables us to perform the most challenging precision carbide grinding and advanced ceramic finishing operations. The result is that we're able to help you meet the tightest tolerances and production schedules better than anyone else. Our capabilities include:

### SURFACE GRINDING

- > Traditional
- > 3 Stahli Double-Disc grinders that hold flatness and parallelism to 0.0001"

### CENTERLESS GRINDING

- > Capacity to produce 10,000 parts/day
- > Can achieve 2-4µin. surface finish with proper diamond wheel grit size
- > Able to provide 24-48 hour delivery using Automatic Cut-Off Machines to pull carbide from stock, and cut & grind material

### OD GRINDING

- > Mastercam® software for centralized design & maximum precision in machine programming
- > Over 30 CNC OD grinders including 3-axis TruTech precision grinders
- > 13 Kellenberger multi-spindle CNC grinders for producing shapes, forms & external threads
- > Ability to rough- & finish-grind, in a single operation, parts with complex shapes or extreme diameter-to-length ratios on 12 Rollomatic CNC grinders
- > 6 Okuma CNC grinders to support high volume OD finishing with multiple operations

### ID GRINDING

- > 8 Okuma CNC grinders for IDs from 0.062" to 15" & tolerance of 0.0002"
- > 4 Usach CNC 4-spindle, 5-axis grinders for IDs from 0.062" to 8" & tolerance of 0.0001"
- > Compound angles, counterbores & radii with low Ra surface finish

### ID HONING

- > Jobs of any size & quantity
- > 5 Sunnen horizontal hones with ID capabilities from 0.060" to 4.00", lengths from 0.125" to 8" & tolerance of 0.0001"
- > Sunnen vertical honing system with large bore size capabilities from 0.750" to 8" at lengths up to 28"

### WIRE EDM

- > Complex & Precision Parts
- > 4 AgieCharmilles EDM machines that cut shapes or forms rapidly in a rough or finishing mode
- > AgieCharmilles from E350 die sinking EDM
- > Mastercam software for quick programming of precision parts

Aggressive Grinding Service, Inc. is an industry leader in precision tungsten carbide grinding and advanced ceramic finishing. The wide range of services we provide for industrial wear, flow control, and metal forming & cutting applications, include:

- > Surface Grinding
- > OD Grinding
- > ID Grinding
- > Wire and RAM EDM
- > Honing
- > Peel Grinding
- > Machining

We specialize in serving the Aerospace, Industrial, Mining & Construction, Oil & Gas, and Transportation markets.

At Aggressive Grinding, we rise above our competitors by achieving the industry's fastest delivery time on all jobs and using the latest technology to support our production and quality control systems.

We're headquartered in Latrobe, PA, near Pittsburgh, and have been in business since 1988, when Lester Sutton founded the company.



**Aggressive Grinding Service, Inc.**  
4413 Route 982 South  
Latrobe, PA 15650  
P: 724-537-7722  
F: 724-537-3893  
E: customerservice@ags-fast.com

**AggressiveGrinding.com**

*For grinding, honing and EDM that's fast and accurate, depend on us!*